

Photovoltaic Module
F-FP101







Technical Data

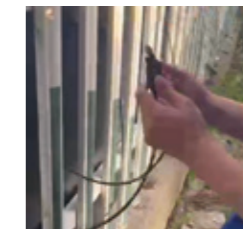
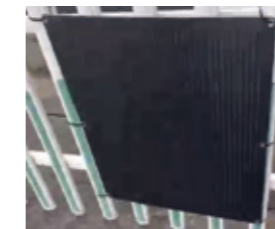
Model	F-FP101-110
Dimensions (L/W/H)	730*845*2.5mm
Peak Power at STC (W)	110
Maximum Power Voltage (V)	10.06
Maximum Power Current (A)	10.94
Open Circuit Voltage (V)	11.76
Short Circuit Current (A)	11.76
Module Efficiency(%)	17.83
Thermal Characteristics & Operating Conditions	
Maximum System Voltage(V)	1000
Maximum System Voltage(V)	15
Power Tolerance	0~+3%
Pmax Temperature Coefficients(W/°C)	-0.350%
Voc Temperature Coefficients(V/°C)	-0.270%
Isc Temperature Coefficients(A/°C)	+0.048%
NOCT Nominal Operating Cell Temperature(°C)	45±2
Operating and Storage Temperature(°C)	-40~+85
Mechanical Characteristics	
Cell Type	166*83Mono
No. of Cells	36(4x9)
Dimensions	730*845*2.5mm
N.W.	2.3kg
Junction box	IP67
Output cables	4mm ² cable 90cm+mc4
MaxWind Load/Snow Load	2400Pa/5400Pa
Certifications	CE RoHS
Packing Specifications	
20FT	243set
40HQ	603sets



Features

-  Better Light Penetration
-  Extremely Flexible
-  Easy Installation
-  Super Thin Lamination

Installations Step



1、Connect the photovoltaic panel to the railing with a tie

2、6 tie straps for one photovoltaic panel

3、Connecting photovoltaic modules

4、Connecting inverter